

# Milesight

## 4K H.265 Mini NVR 1000 Series

4K+H.265



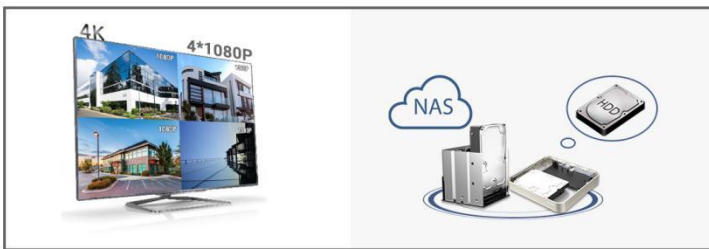
DATASHEET

### KEY FEATURES

- ▶ 4/8-CH Network Video Input (Up to 4/8 channel IP cameras can be connected.)
- ▶ H.265\* (H.265\* allows to cut down 70%~80% bandwidth while ensuring the high quality of images compared with H.264.)
- ▶ Dual Stream Recording (Supporting Primary Stream and Secondary Stream recording simultaneously.)
- ▶ HTML5 Streaming Ready (Support previewing the video via all major browsers without plug-in when Video Codec is set to H.265.)
- ▶ Auto Backup (The latest 24 hour's video will be automatically backed up to USB port devices or NAS after setting up the backup.)
- ▶ Versatile Interfaces (A whole array of ports provides all necessary features for effective surveillance.)

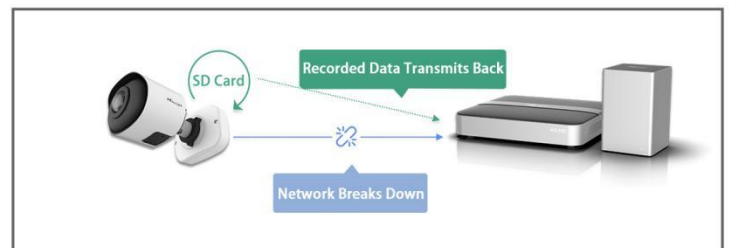
### Power Decoding Capacity & Flexible Storage Options

- The 4K NVR is equipped with solid 4K decoding and display capabilities and maximum supports simultaneous viewing of 4\*1080P or 8\*720P network cameras.
- Providing flexible storage options including HDD and NAS to address the needs for versatile storage.



### Reliability

- ANR can store video data on the camera storage card when network between IPC and NVR is disconnected and retransfer the recorded video to NVR after network recovers.



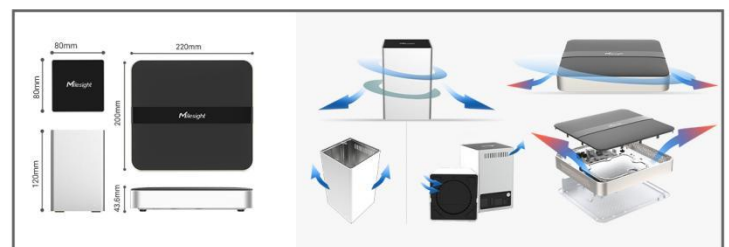
### AI Video Analytics & POS Integration

- All-in-one to Manage AI:  
VCA Function focus on human and vehicle detection.  
People Counting provides high-accuracy data and statistic reports.
- POS machine information can be transferred to and displayed on the NVR.



### Ultra Mini Size & Thermal Design

- Ultra-mini size offers a compact design without compromising functionality, providing an easier way to ensure high-quality video management.
- The metal panel on the bottom of the NVR dissipates the heat effectively and the ventilation holes on the side and bottom panels maximize airflow and carry heat away.



# 4K H.265 Mini NVR 1000 Series



Model		MS-N1004-UC	MS-N1008-UC	MS-N1008-UNC
Video/Audio Input	Network Video Input	4-CH		8-CH
	Bandwidth	Incoming	40Mbps	
		Outgoing	40Mbps	
Video/Audio Output	HDMI Output	1-CH, Resolution: 3840x2160/30Hz, 1920x1080/60Hz, 1920x1080/50Hz, 1280x1024/60Hz, 1280x720/60Hz, 1024x768/60Hz HDMI Supports Audio Output		
	Dual Stream	Support		
	Recording Resolution	8MP/6MP/5MP/4MP/3MP/1080P/UXGA/720P/D1/VGA/CIF/QCIF		
	Synchronous Playback	1*(30fps @8MP), 1*(30fps @6MP), 1*(30fps @5MP), 2*(30fps @4MP), 2*(30fps @3MP), 4*(30fps @1080P), 4*(30fps @720P)	1*(30fps @8MP), 1*(30fps @6MP), 1*(30fps @5MP), 2*(30fps @4MP), 2*(30fps @3MP), 4*(30fps@1080P), 8*(30fps @720P)	
Video/Audio Compression	Video Compression	H.265*/H.265(HEVC)/H.264*/H.264		
	Audio Compression	G.711/AAC/G.722/G.726		
	Sample Rate	8KHz/16KHz		
Storage	SATA	1*SATA HDD(3.5")		2*SATA HDD(2.5")
	Capacity	Up to 20TB capacity for each HDD		Up to 4TB capacity for each HDD
Recording Management	Recording Type	Continuous, Event (Motion Detection, Alarm, VCA, Smart Analysis)		
	Snapshot Type	N/A		
	Playback Type	General Playback, Event Playback, Tag Playback, Split Playback, Picture Playback		
Backup	Backup	Video Backup, Image Backup		
Network	Protocol	IPv4/IPv6, TCP, UDP, RTP, RTSP, RTCP, HTTP, HTTPS, DNS, DDNS, DHCP, NTP, SNTP, SMTP, SNMP, UPnP, NFS		
External Interface	Network Interface	1*RJ45 10/100Mbps		1*RJ45 10/100/1000Mbps
	USB Interface	2*USB 2.0		
General	Compatibility	ONVIF, API		
	Advanced Function	ANR		
	ANPR	N/A		
	Video Analysis	Region Entrance, Region Exiting, Advanced Motion Detection, Tamper Detection, Line Crossing, Loitering, People Counting, Object Left, Object Removed		
	Keyboard Control	Milesight Keyboard (MS-K01)		
	Power Supply	DC 12V 2A		DC 12V 1.5A
	Consumption	≤2.3W(Without HDD)		≤4.1W(Without HDD)
	Working Conditions	Temperature: -10℃~55℃/Humidity: 10%~90%		
	Dimensions	220mm(W)X200mm(D)X43.6mm(H)		80mm(W)X80mm(D)X120mm(H)
	Weight	0.19Kg		0.85Kg
Warranty	3/5 Years			



## Interfaces

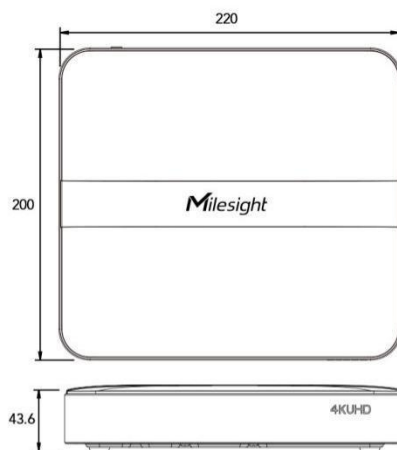
### MS-N1004-UPC/ MS-N1008-UPC



- 1. LED Indicator
- 2. Power Button
- 3. USB
- 4. HDMI
- 5. LAN
- 6. PoE Port 1/2/3/4
- 7. Power

## Structure Diagrams

### MS-N1004-UPC/ MS-N1008-UPC



Units: mm

## Naming Convention

