



Product Code

F01675

MARINE SIP PANEL ST3 CP105

Reference

1675

EAN

8424299016757

Description.

Description

Marine SIP 5 Button Panel

MARINE is Fermax's IP65 IK09 vandal-proof panel. It is made of 2.5mm thick stainless steel, specifically AISI 316L steel. Marine is the perfect choice for installation in extreme weather conditions or hazardous environments, such as humid or corrosive climates. The panel is available in stainless steel and also in different color or with laser engraving. Check out reference 31722 for the Marine SIP Elite Panel.

The call buttons are vandal-proof, made of stainless steel with an anti-blocking system to withstand any impact. They include a cardholder to display informative labels. Marine panels do not include the flush or surface mounting box, which must be requested separately. Surface-mounted panels come with a protective hood.

- Configuration via webserver
- Programmable call button for sequential P2P calls to up to 8 different terminals
- Ability to connect to up to two local or remote VoIP PBXs

- Compatible with MEET devices and MEET ME APP*

*For SIP integrations with MEET devices and/or call forwarding to MEET ME, refer to the installer manual.

MEET ME call divert license ref. 1496 to mobile must be purchased separately.

Protocols	SIP v1 (RFC2543), SIP v2 (RFC3261) over TCP, UDP, or TLS RTP/RTCP/SRTP STUN DHCP SNTP FTP/TFTP HTTP/HTTPS TR-069
Video	HD 2Mpx camera Resolution 720p/1080p H.264
Audio	Codecs G.711A/U, G.729A/B, iLBC, G.723.1, G.726-32K, G.722, Opus DTMF In-band, Out-band (RFC2833/SIP INFO)
Outputs	2x Relay C-N/O, N/C maximum 30V/2A DC, 125V/0.5A AC
Network	Ethernet 10/100 Mbps IPv4, IPv6, IPv4+IPv6 modes Static, Dynamic, PPoE IP addressing L2TP, OpenVPN VPN VLAN
Power Supply	PoE Class 3 (max 30W) 12-24V DC/1A
Others	Working temperature: -30°C to 60°C Working humidity: up to 95%, without condensation Tested in accordance with IEC 60068

Details.

Weight (kg)

1.647996

Packaging measurements

(height x width x depth) cm

37x16,4x8,2

Video Door Entry system

Technologie

SIP

Manuals

- 970299b Guia rapida Placa SIP Marine V07_24.pdf
- 970300Ab SIP marine panel installer manual v09_24.pdf
- 970300Eb Manual instalador Placa SIP Marine v09_24.pdf
- 970300Fb SIP marine panel installer manual v09_24.pdf
- 970300Ib SIP marine panel installer manual v09_24.pdf
- 970300Ob SIP marine panel installer manual v09_24.pdf
- 970300Pb SIP marine panel installer manual v09_24.pdf
- 970300Yb SIP marine panel installer manual v09_24.pdf

Declaration of conformity

- DOCF01675EN.pdf

Accessories



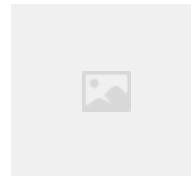
F04643

MARINE ST3 FLUSH BOX



F04647

MARINE ST3 SURFACE BOX



F01496

MEETME CALL DIVERT LICENSE W/O
TERM 1APT



F04813

P.S.U. DIN6 100-240VAC/12VDC-2A



F01586

SWITCH POE 4 PORTS



F01587

SWITCH POE 8 PORTS