

Concrete screw BTS5



Advantages



BTS5 B, hex-head



BTS5 PT, pan-head

- Direct and fast fixing
- Small drill hole with only 5 mm diameter
- Low embedment depth of only 25 mm
- Low setting torque: Manual installation without battery screwdriver possible
- Especially suitable for electrical and sanitary fixings
- High recommended load of 80kg in concrete
- Very good corrosion resistance due to zinc flake coating

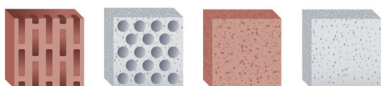
Suitable building materials

Very suitable



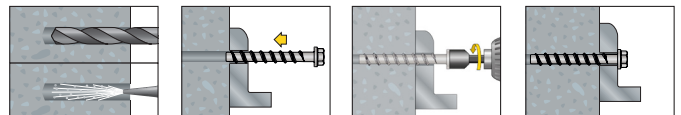
- Concrete

Suitable

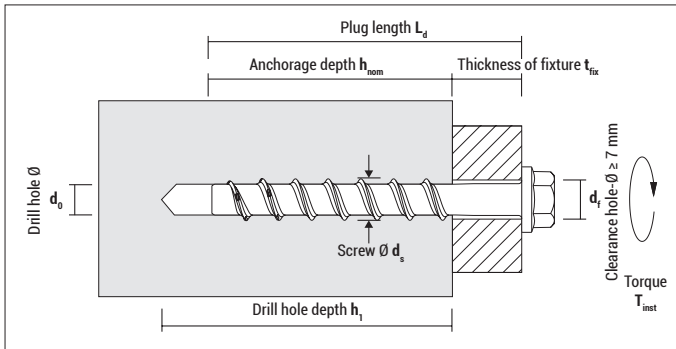


- Natural stone
- Solid brick
- Solid sand-lime brick
- Hollow brick

Mounting



Concrete screw BTS5



BTS5 B, zinc flake coating with hex-head with integral washer, washer-Ø: 11 mm

Type $d_0 - L_d$	Art-No	$d_{s \times} L_d$ [mm]	$h_1 \geq$ [mm]	$h_{nom} \geq$ [mm]	$t_{fix} \leq$ [mm]	Recess	€ / 100 pcs	[pcs]	[pcs]
5-30/5	9ZG530BTSB	6,4 x 30	35	25	5	SW8		100	1.800
5-45/20	9ZG545BTSB	6,4 x 45	35	25	20	SW8		100	1.200
5-60/35	9ZG560BTSB	6,4 x 60	35	25	35	SW8		100	1.200



BTS5 PT, zinc flake coating with pan-head (TX 25), head-Ø: 10 mm

Type $d_0 - L_d$	Art-No	$d_{s \times} L_d$ [mm]	$h_1 \geq$ [mm]	$h_{nom} \geq$ [mm]	$t_{fix} \leq$ [mm]	Drive	€ / 100 pcs	[pcs]	[pcs]
5-30/5	9ZG530BTSPT	6,4x30	35	25	5	TX25		100	1.800
5-45/20	9ZG545BTSPT	6,4x45	35	25	20	TX25		100	1.200
5-60/35	9ZG560BTSPT	6,4x60	35	25	35	TX25		100	1.200

Loads, spacing and edge distance

Type	Non-cracked concrete ≥ C20/25		Cracked concrete ≥ C20/25		Solid brick Mz 12/ Solid brick KS 12		Hollow brick HLz 12/ KSL 12 Brick wall thickness ≥ 15 mm		Spacing	Edge distance	Min. thick- ness of structural part
	F_{rec} [kN]	$T_{inst.max}$ [Nm]	F_{rec} [kN]	$T_{inst.max}$ [Nm]	F_{rec} [kN]	$T_{inst.max}$ [Nm]	F_{rec} [kN]	$T_{inst.max}$ [Nm]	S_{min} [mm]	S_{min} [mm]	h_{min} [mm]
BTS5	0,8	5	0,35	5	0,3	2	0,12	1	75	40	80

F_{rec} : Recommended loads incl. safety factor of 4

For anchorage depth > 25 mm the recommended tension load increases proportionally.